

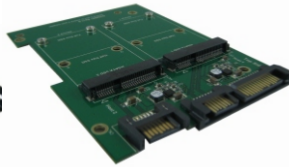
# AD963DE9 Assembly Guide

Before Assembling:

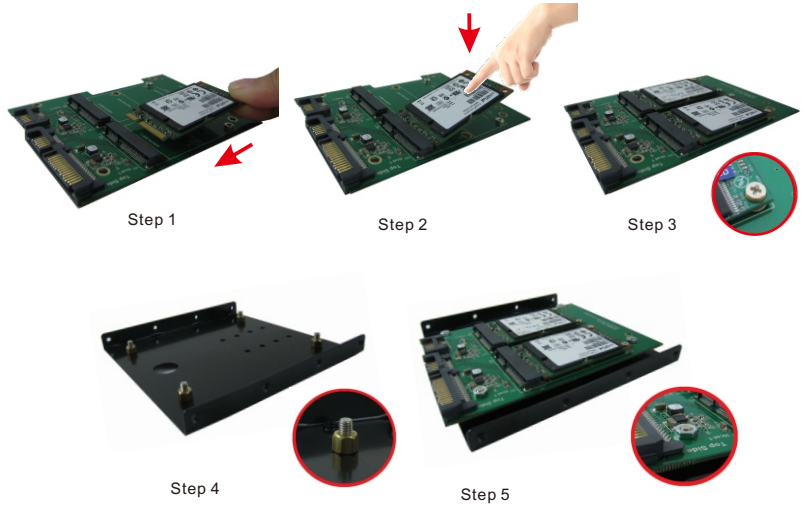
1. Please check the accessory list before assembly. Contact your local dealer if you find any parts missing.
2. Please read through the assembly guide.



3.5" Bracket



AD963DE9 Adapter



Step 1

Step 2

Step 3

Step 4

Step 5

## Accessory Package

(1)M2x3 Screw \*5pcs  
P/N: 13MISW00005M11  [for Full size SSD]


(2)M2x6mm(H) Screw \*5pcs  
P/N: 13MISW00001M11  [for Half size SSD]

(3)Cooper nut /H: 4.0mm \*5pcs  
P/N: 13MICA00001M05  [for Half size SSD]

(4)M2 nut \*5pcs  
P/N: 13MINU00001M11  [for Half size SSD]

## Accessory package for 3.5" Bracket

(5)M3x8 Screw \*4pcs  
P/N: 13MISW00006M11 

(6)M3x4mm Cooper nut \*4pcs  
P/N: 13MICP00003M11 

(7)M2 Nut \*4pcs  
P/N: 13MINU00002M11 

The above accessories parts are all have extra 1pc for spare part.

Step 1. Insert mSATA SSD into mSATA (mini PCI-e) socket.  
Step 2. Press mSATA SSD down and aim to the copper nuts below.  
Step 3. Fix mSATA SSD on the adapter with 2pcs of M2\*3 screws.

-----Two mSATA SSD are using the same installation -----

Step 4: Put (5)M3x8 screw from bottom side to top side of 3.5" frame and fix with (6)M3x4 copper nut.

Step 5: Fixed assembled mSATA+Adapter (step 3) on 3.5" frame with (7)M3 nut.

(If your mSATA SSD is half size form factor, pls use extra 2pcs of copper nuts as stand like mounted ones.)